



TESSUTI & FINITURE
2021

TPC
TABLE PLACE
CHAIRS_

tableplacechairs.com/it



BLACK
R-10

TQ4
TABLE PLACE
CHAIRS...
cat a / revival

PUTTY
R-12

TQ4
TABLE PLACE
CHAIRS...
cat a / revival

NAVY
R-13

TQ4
TABLE PLACE
CHAIRS...
cat a / revival

TEAL
R-14

TQ4
TABLE PLACE
CHAIRS...
cat a / revival

YELLOW
R-15

TQ4
TABLE PLACE
CHAIRS...
cat a / revival

SUNSET
R-11

TQ4
TABLE PLACE
CHAIRS...
cat a / revival

NEUTRAL
R-16

TQ4
TABLE PLACE
CHAIRS...
cat a / revival

NAVY
R-13

TQ4
TABLE PLACE
CHAIRS...
cat a / revival

TEAL
R-14

TQ4
TABLE PLACE
CHAIRS...
cat a / revival

YELLOW
R-15

TQ4
TABLE PLACE
CHAIRS...
cat a / revival



Tessuti **PAG.4** / Finiture **PAG.20** / Calzini in metallo **PAG.24**

tessuti



Tutti i nostri prodotti imbottiti sono disponibili sia in tessuto cliente che nella nostra gamma di tessuti standard, accuratamente selezionata per il mercato del contract in tutto il mondo.

Una gamma di tessuti completamente collaudata, adatta all'uso contract e testata a livello globale. Questi tessuti sono ignifughi e adatti per un uso contrattuale in tutto il mondo.

Tutti i tessuti che proponiamo sono conformi a Crib 5 per l'arredo contract a livello globale

Tutti i tessuti della nostra gamma hanno un minimo di 50.000 test di sfregamento (Martindale rub test)

Tutta la schiuma utilizzata nei nostri prodotti imbottiti è una schiuma CMHR (classificata per il fuoco) e dove si tratta di una schiuma formata usiamo una schiuma certificata PUR.

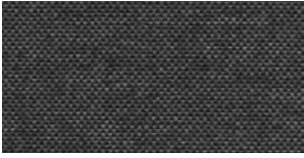
QUESTI TESSUTI SODDISFANO I REQUISITI PER IL
FUOCO E L'USO CONTRATTUALE IN TUTTO IL MONDO





TESSUTI / CATEGORIA A: REVIVAL

Un atto o istanza di rianimazione; lo stato di essere rianimato. *Rinnovata attenzione o interesse per qualcosa. Una nuova presentazione della pubblicazione di qualcosa di vecchio.* Abbiamo ritenuto che riportare in vita qualcosa fosse appropriato per questa gamma di tessuti; con i loro toni tenui, l'aspetto e l'atmosfera discreti. Le variazioni di colore e trama gli conferiscono un aspetto e una sensazione rivisitati, come se fossero stati riportati in vita per l'arredamento moderno.



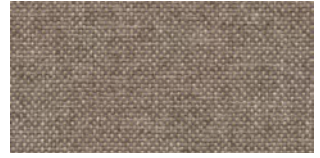
R-01 Charcoal



R-02 Beige



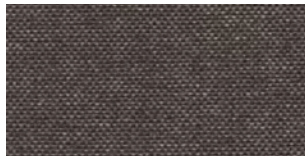
R-03 Light Grey



R-04 Wheat



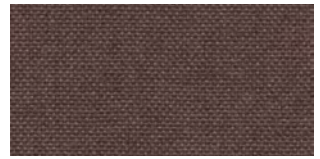
R-05 Light Brown



R-06 Dark Brown



R-07 Brown



R-08 Chocolate



R-09 Dark Chocolate



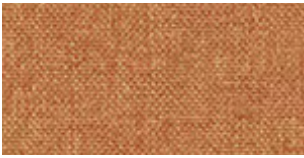
R-10 Black



R-11 Sunset



R-12 Yellow



R-13 Orange



R-14 Rhubarb & Custard



R-15 Putty



R-16 Neutral



R-17 Grass



R-18 Autumn Red



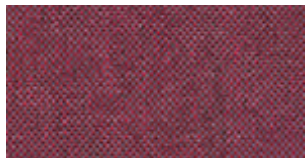
R-19 Dusk



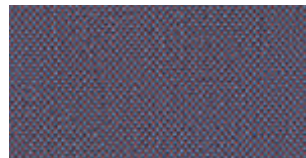
R-20 Deep Red



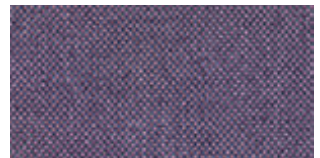
R-21 Red Brown



R-22 Deep Pink



R-23 Blueberry



R-24 Lavender








TESSUTI / CATEGORIA A: REVIVAL

Un atto o istanza di rianimazione; lo stato di essere rianimato. *Rinnovata attenzione o interesse per qualcosa. Una nuova presentazione della pubblicazione di qualcosa di vecchio.* Abbiamo ritenuto che riportare in vita qualcosa fosse appropriato per questa gamma di tessuti; con i loro toni tenui, l'aspetto e l'atmosfera discreti. Le variazioni di colore e trama gli conferiscono un aspetto e una sensazione rivisitati, come se fossero stati riportati in vita per l'arredamento moderno.



R-25 Soft Purple



R-26 Autumn Pink



R-27 Soft Pink



R-28 Aqua



R-29 Light Blue



R-30 Mid Blue



R-31 Midnight Sky



R-32 Sea Blue



R-33 Dark Blue



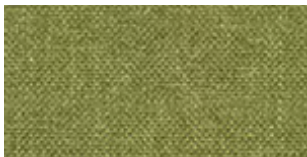
R-34 Liquorice



R-35 Hazy Purple



R-36 Green



R-37 Bright Green



R-38 Moss



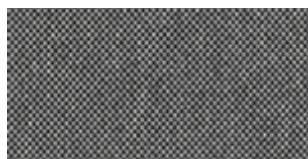
R-39 Olive



R-40 Dark Grey



R-41 Stone



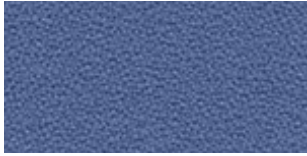
R-42 Grey

La forza che permette ad un oggetto di continuare a muoversi, oppure che permette ad un evento di svilupparsi dopo il suo inizio. Momentum è colore e movimento! Questa gamma ha così tante sfumature a disposizione che sembra creare movimento all'interno di qualsiasi spazio.

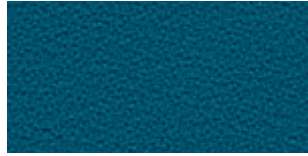


TESSUTI / CATEGORIA A: MOMENTUM

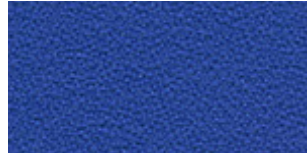
La forza che permette ad un oggetto di continuare a muoversi, oppure che permette ad un evento di svilupparsi dopo il suo inizio. Momentum è colore e movimento! Questa gamma ha così tante sfumature a disposizione che sembra creare movimento all'interno di qualsiasi spazio.



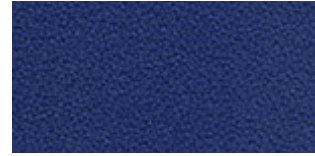
M-25 Blue Moon



M-26 Dark Teal



M-27 Navy



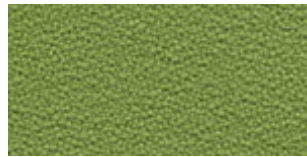
M-28 Dark Blue



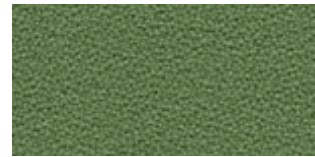
M-29 Midnight



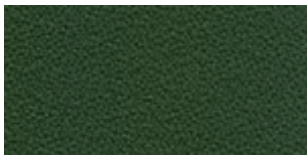
M-30 Emerald



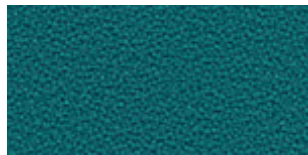
M-31 Lime



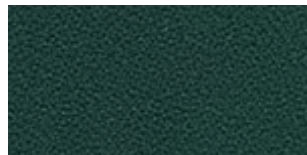
M-32 Moss



M-33 Dark Green



M-34 Teal



M-35 Forest Green



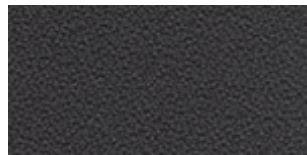
M-36 Fog



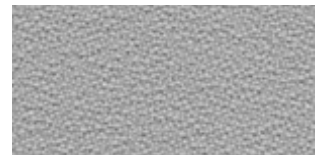
M-37 Dark Grey



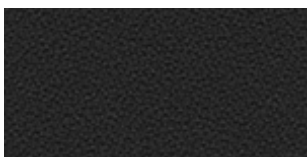
M-38 Rock



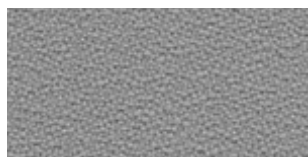
M-39 Anthracite



M-40 Elephant



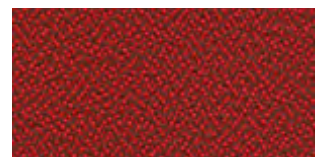
M-41 Black



M-42 Stone



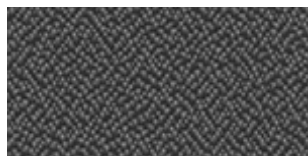
M-43 Hedgehog



M-44 Pinball



M-45 Sea Floor



M-46 Badger



CALIFORNIA

Diversi tipi di persone incluse in un insieme. Abbiamo scelto diversity, che si distingue per la sua trama e i suoi colori.



D-01 Black



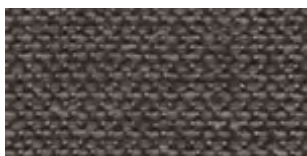
D-02 Hounds Tooth



D-03 Stone



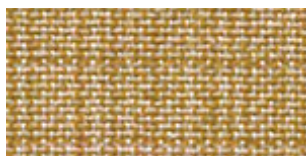
D-04 Chocolate



D-05 Smoke



D-06 Dark Brown



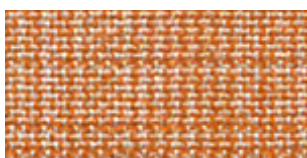
D-07 Canary



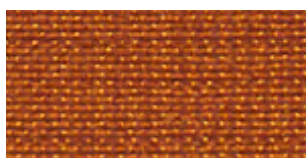
D-08 Corn



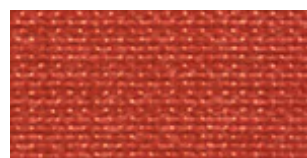
D-09 Sun



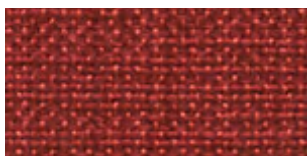
D-10 Clementine



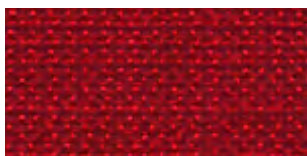
D-11 Jaffa



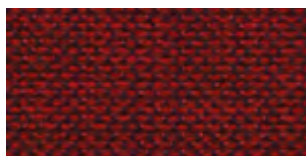
D-12 Rhubarb



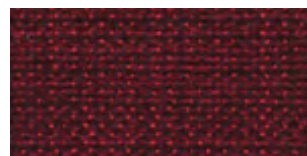
D-13 Bergen



D-14 Red



D-15 Mulled Wine



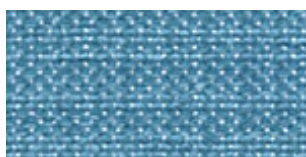
D-16 Burgundy



D-17 Grape



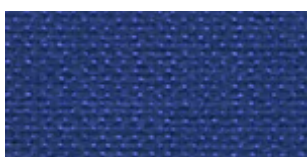
D-18 Baby Blue



D-19 Crystal Blue



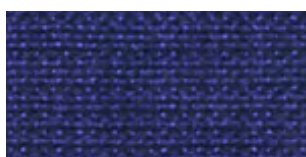
D-20 Sapphire



D-21 Oxford



D-22 Midnight



D-23 Blueberry



D-24 Humpback Blue



IMO



M1-M2



CLASS 1 IM



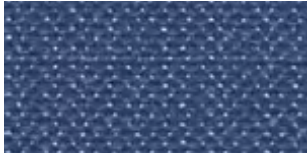
B1-B2



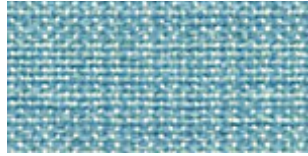
CALIFORNIA

TESSUTI / CATEGORIA B: DIVERSITY

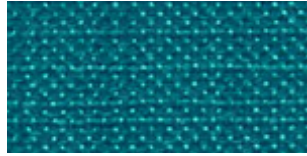
Diversi tipi di persone incluse in un insieme. Abbiamo scelto diversity, che si distingue per la sua trama e i suoi colori.



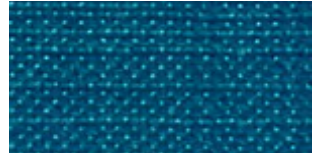
D-25 Winter Blue



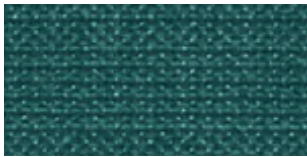
D-26 Peppermint



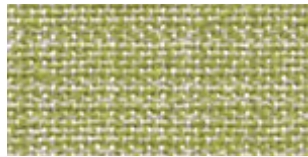
D-27 Jolt



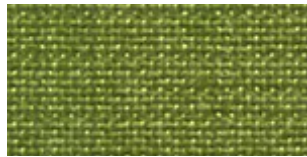
D-28 Ocean



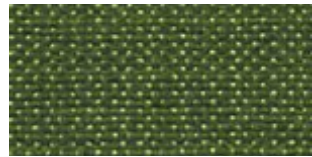
D-29 Butterfly Green



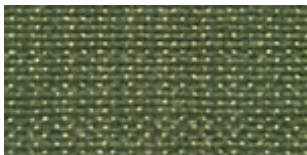
D-30 Mojito



D-31 Apple



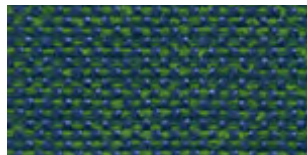
D-32 Lizard



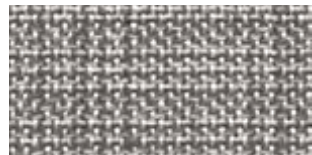
D-33 Olive



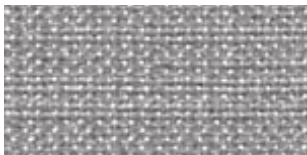
D-34 Green



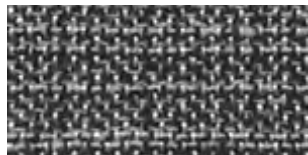
D-35 Seaweed



D-36 Concrete



D-37 Light Grey



D-38 Zebra



D-39 Inc



D-40 Charcoal



IMO



MI-M2



CLASS 1 IM



BI-B2

CALIFORNIA



TESSUTI / CATEGORIA B: EMOTION ECOPELLE

Un sentimento forte come l'amore o la rabbia, o un sentimento intenso. I sentimenti, l'amore, la rabbia, le emozioni sono tutte aree di immaginazione, che hanno bisogno di essere controllate, proprio come questa collezione, poesia e musica.



Em-01 White Room



Em-02 Beige Before Beauty



Em-03 Scroll Of Parchment



Em-04 Harvest



Em-05 Pearl Band



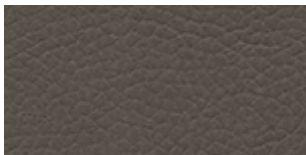
Em-06 Clear Light



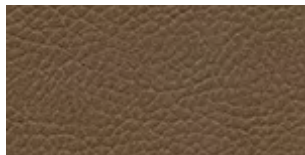
Em-07 Wake Up



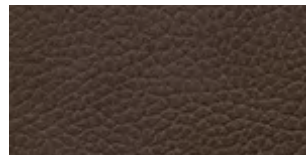
Em-08 Association



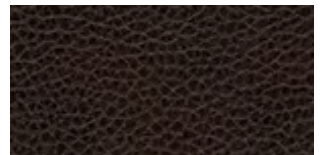
Em-09 Cinder Road



Em-10 Revelations



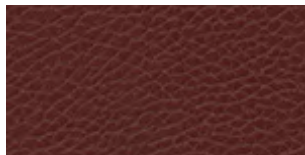
Em-11 Illusion



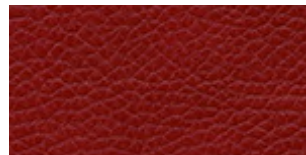
Em-12 In The Woodland



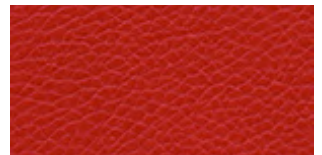
Em-13 Lotus Rose



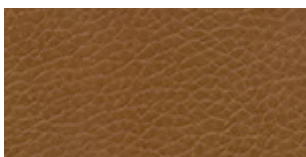
Em-14 Tiger Curry



Em-15 Electric Prune



Em-16 Morning Glory



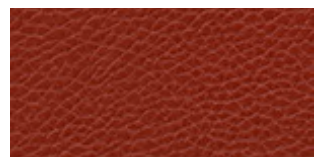
Em-17 Hippo Dream



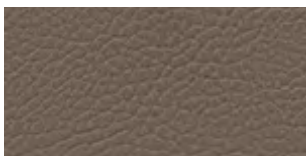
Em-18 Two Suns



Em-19 Rust Never Sleeps



Em-20 Bark



Em-21 Shady Grove



Em-22 Jungle Marmalade



Em-23 Lime Ranger



Em-24 The Green Tambourine



CALIFORNIA

TESSUTI / CATEGORIA B: EMOTION ECOPELLE

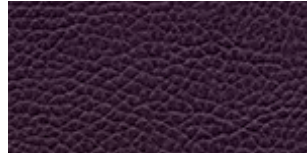
Un sentimento forte come l'amore o la rabbia, o un sentimento intenso. I sentimenti, l'amore, la rabbia, le emozioni sono tutte aree di immaginazione, che hanno bisogno di essere controllate, proprio come questa collezione, poesia e musica.



Em-25 Fever Tree



Em-26 Moby Grape



Em-27 Jewel In The Crown



Em-28 The Peppermint Trolley



Em-29 Lagoon Mist



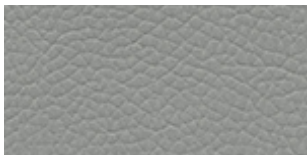
Em-30 Blue Cheer



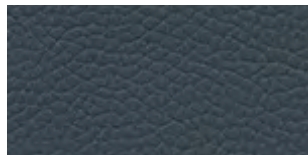
Em-31 The Imperial



Em-32 Ultimate Spinach



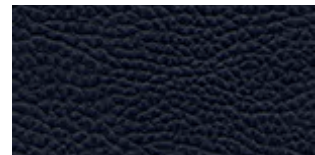
Em-33 Battle Ship Blues



Em-34 Basic Blues



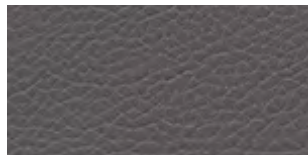
Em-35 The Palace



Em-36 Night Watch



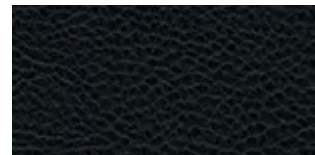
Em-37 Silver City



Em-38 Stone Cheer



Em-39 Window To The Stars

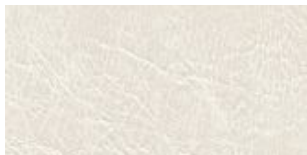


Em-40 Dark Train



CALIFORNIA

Cercare e scoprire. Il range Explore è stato ispirato dalla scoperta degli elementi naturali; che siano essi sensoriali o visivi, questi colori vi daranno questa sensazione.



Ex-01 Ice



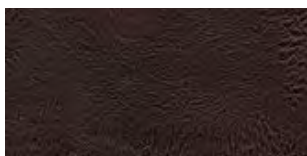
Ex-02 Luxury



Ex-03 Moon



Ex-04 Chimney



Ex-05 Cocoa



Ex-06 Shadow



Ex-07 Huntsman



Ex-08 Pipe



Ex-09 Nappa



Ex-10 Carmenera



Ex-11 Atmosphere



Ex-12 Duck Egg



Ex-13 Ocean



IMO



M1-M2



CLASS 1 IM

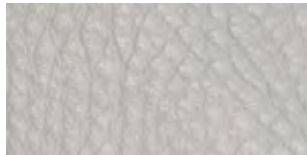


B1-B2

CALIFORNIA

TESSUTI / CATEGORIA C: JOURNAL VERA PELLE

Una traccia scritta di ciò che hai fatto ogni giorno, una specie di diario segreto. Questa gamma di colori fa emergere viaggi, esperienze e oggetti che entreranno nei vostri pensieri e sentimenti mentre vi guardate intorno.



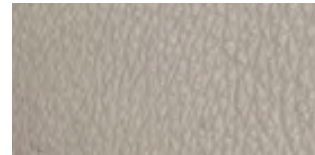
J-01 Laundry



J-02 Candle



J-03 Paris Sky



J-04 Cloud



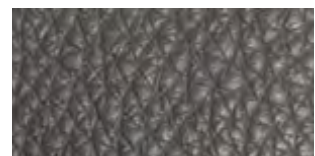
J-05 Pebble



J-06 Baseball



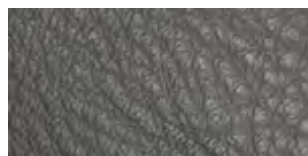
J-07 Riding Boot



J-08 Locomotive



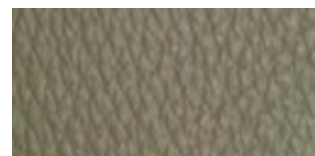
J-09 Berries



J-10 Broadway



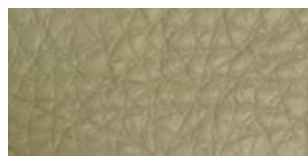
J-11 Lucky



J-12 Mangrove



J-13 Pigeon



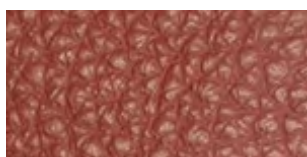
J-14 Field



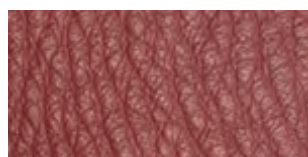
J-15 Clay



J-16 Ballet



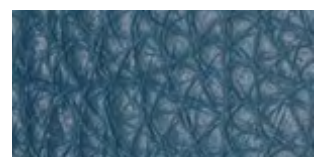
J-17 Hamper



J-18 Merchant



J-19 Voyage



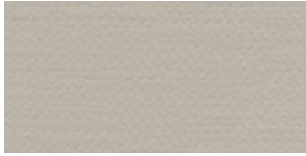
J-20 Gulf Stream



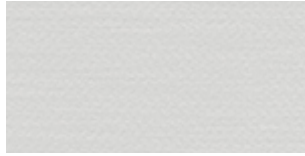


TESSUTI / CATEGORIA D: VITALITY

Energia e forza. Questo tessuto è giovanile; è leggero e vibrante, dona un senso di vitalità.



V-01 Cream



V-02 White



V-03 Beige



V-04 Putty



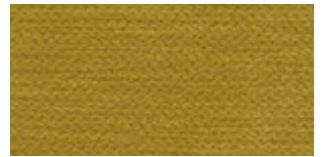
V-05 Mole



V-06 Dark Brown



V-07 Anthracite



V-08 Mustard



V-09 Tanagerine



V-10 Rust Orange



V-11 Red



V-12 Deep Red



V-13 Maroon



V-14 Violet



V-15 Dark Blue



V-16 Midnight Blue



V-17 Navy



V-18 Blue



V-19 Aqua



V-20 Teal



V-21 Green



V-22 Racing Green



V-23 Forest Green



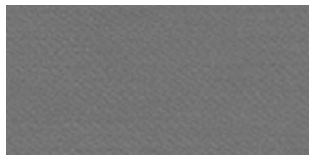
V-24 Moss



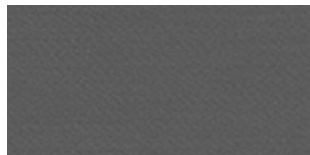
CALIFORNIA

TESSUTO / CATEGORIA D: VITALITY

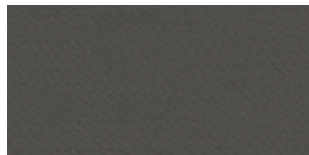
Energia e forza. Questo tessuto è giovanile; è leggero e vibrante, dona un senso di vitalità.



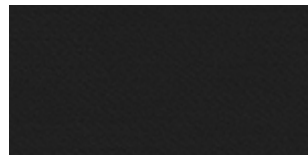
V-25 Stone



V-26 Grey



V-27 Charcoal



V-28 Black



IMO



MI-M2



CLASS 1 IM



B1-B2

CALIFORNIA

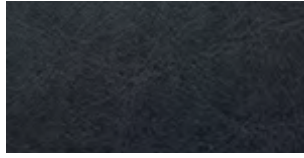


TESSUTO / CATEGORIA E: TRADITION VERA PELLE

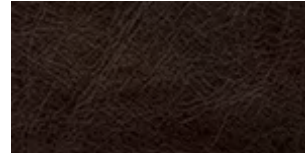
Una formula, un principio o un modo di agire che le persone in una particolare società o gruppo hanno seguito per molto tempo. Fare un passo indietro nel tempo, seguire un rituale secolare, o quel suono musicale che porta un senso di tradizione. L'estetica e le proprietà naturali della vera pelle hanno una qualità che è stata accettata nella società per molti anni.



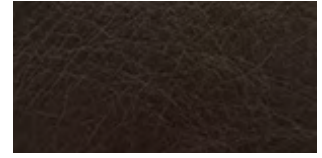
T-01 Ebony



T-02 Coast



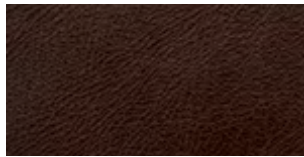
T-03 Motley



T-04 Horizon



T-05 Ancient



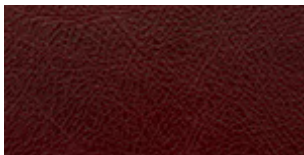
T-06 Burnt



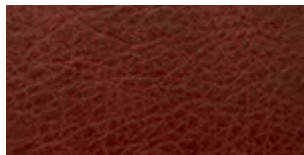
T-07 Roots



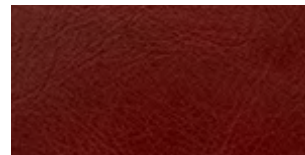
T-08 Wood



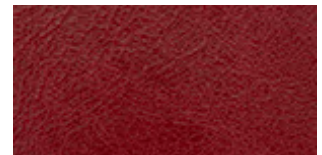
T-09 Wine



T-10 Classical



T-11 Ensign



T-12 Rythmn



T-13 Folk



T-14 Gypsy



T-15 Hogan



T-16 Icon



T-17 Corn



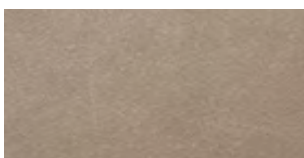
T-18 Fresco



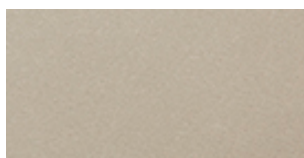
T-19 Bind



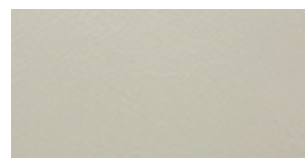
T-20 Euphoric



T-21 Clouding



T-22 Mist

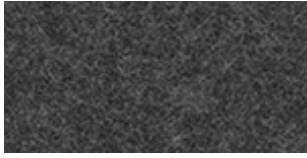


T-23 Chrome

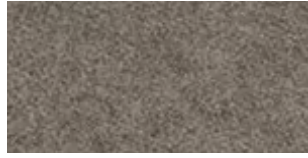


TESSUTO / CATEGORIA E: INFUSION

L'atto di aggiungere una cosa all'altra per renderla più forte o migliore. Gusto, colore, odore, suoni e quelle terre lontane, si uniscono per creare un'infusione di texture che si trova in questa gamma di tessuti.



I-01 Charcoal



I-02 Siberia



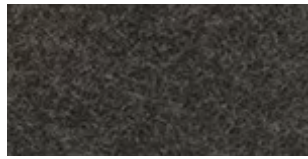
I-03 Beige



I-04 Brown



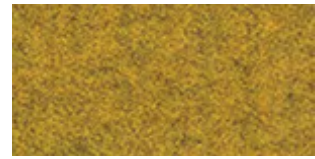
I-05 Burnt



I-06 Dark Brown



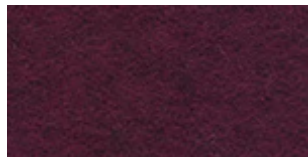
I-07 Pumpkin



I-08 Mustard



I-09 Deep Red



I-10 Burgundy



I-11 Blush Pink



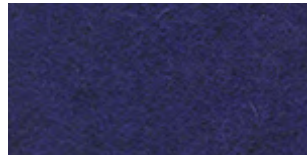
I-12 Magenta



I-13 Red



I-14 Flamingo



I-15 Dark Blue



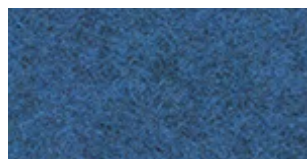
I-16 Blackcurrent



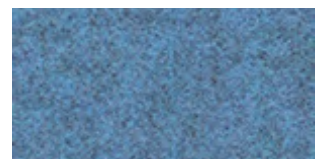
I-17 Purple



I-18 Star Of Bombay



I-19 Blue



I-20 Light Blue



I-21 Navy



I-22 Turtle Bay



I-23 Midnight Blue



I-24 Sapphire



CLASS 1 IM

TESSUTO / CATEGORIA E: INFUSION

L'atto di aggiungere una cosa all'altra per renderla più forte o migliore. Gusto, colore, odore, suoni e quelle terre lontane, si uniscono per creare un'infusione di texture che si trova in questa gamma di tessuti.



I-25 Copenhagen



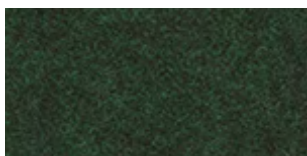
I-26 Leaf Green



I-27 Lime



I-28 Citrus



I-29 Forest Green



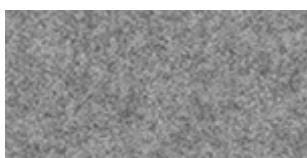
I-30 Kiwi



I-31 Mist



I-32 Black



I-33 Ice



CLASS 1 IM

finiture



METALLI

Quando si specifica l'ottone, il rame e lo zinco, è necessario selezionare una finitura per il livello di patina. Tutti i piani dei tavoli sono poi laccati con vernice trasparente.

Tutto l'acciaio e l'alluminio può essere verniciato a polvere in qualsiasi colore RAL. L'acciaio è disponibile in vernice trasparente per dare la finitura industriale. L'alluminio pressofuso è disponibile lucido o verniciato a polvere.

Il cromo e l'alluminio lucidato sono nella finitura naturale dove applicabile.



SOSTENIBILITA'

I materiali plastici riciclati sono utilizzati per i piani dei tavoli e le superfici e sono disponibili su richiesta. Questi avranno variazioni di colore e talvolta differiranno dai campioni.

I materiali includono foresso in legno riciclato, terrazzo in plastica riciclata, jesmonite e una serie di altri materiali sostenibili innovativi.



LEGNO

I legni utilizzati nella nostra produzione di sedie e tavoli sono rovere, faggio e frassino. I legni da esterno utilizzati sono Iroko e Robinia, con finitura oliata naturale.

Tutti i legnami provengono da fonti sostenibili tramite schemi FSC e PEFC. Il legno è disponibile nelle nostre tinte e colori standard, invecchiato su richiesta. Il multistrato utilizzato ha un'impiallacciatura di faggio o rovere. Tutte le lacche utilizzate sulle nostre finiture in legno sono a base d'acqua per supportare i nostri processi e obiettivi di sostenibilità, salute e sicurezza.



PIETRA

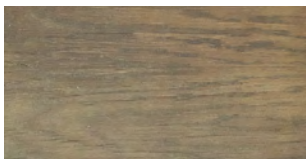
Tutte le pietre sono un materiale naturale e possono presentare difetti, tutto il marmo e il terrazzo necessitano di rifiniture per sigillare la pietra. Il vino e gli oli scuri si macchiano se non vengono rimossi immediatamente.

Il quarzo e la resina possono essere formati e sono disponibili in una serie di modelli, dove richiesto, i disegni e le specifiche saranno richiesti per l'approvazione prima della produzione.



FINITURE / TINTE LEGNO

TINTE ROVERE



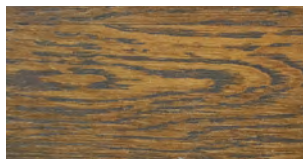
O210 The Jetty



O219 The Fjords



O207 Dimension



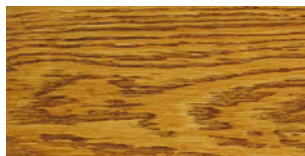
O208 The Roastery



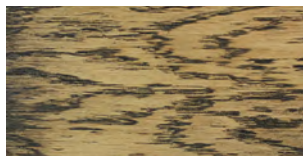
O209 Barn Beam



O216 Looking Natural

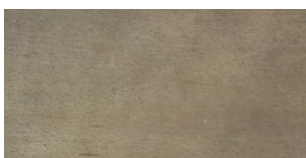


O218 The School Fence

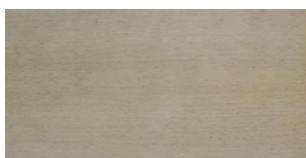


Distressed On Request

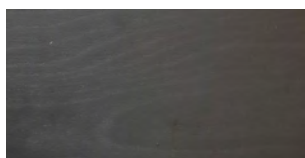
TINTE FAGGIO



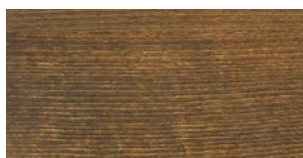
B210 The Jetty



B219 The Fjords



B207 Dimension



B208 The Roastery



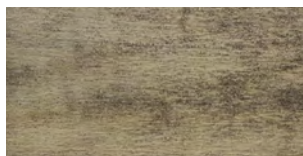
B209 Barn Beam



B216 Looking Natural



B218 The School Fence



Distressed On Request

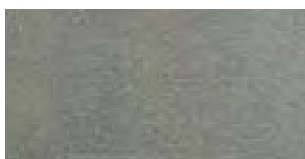
FINITURE / ZINCO



Z1 Zinco Chiaro



Z2 Zinco



Z3 Zinco Scuro

FINITURE / RAME



C1 Rame chiaro



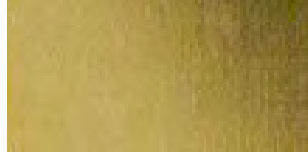
C2 Rame



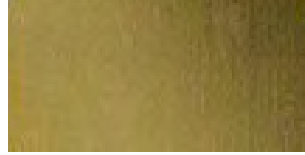
C3 Rame scuro

FINITURE / OTTONE

B1 Ottone chiaro



B2 Ottone



B3 Ottone scuro

FINITURE / LAMINATO

Bianco



Black Soft Touch



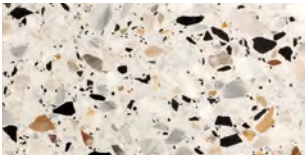
Burnt Red Soft Touch



Blue Soft Touch



White Soft Touch

FINITURE / PIETRA

Terrazzo 07



Carrara

FINITURE / LEGNO INVECCHIATO

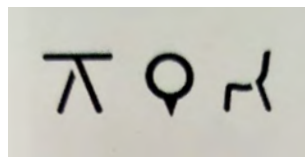
Woodagain

FINITURE / VETRO STAMPATO

Antiqued



RAL Colour



Image/Logo



3007 Black Red



3020 Traffic Red



2001 Red Orange



2003 Pastel Orange



1018 Zinc Yellow



1014 Ivory



6019 Pastel Green



6037 Pure Green



6035 Pearl Green



6004 Blue Green



6033 Mint Turquoise



6034 Pastel Turquoise



5012 Light Blue



5022 Night Blue



5008 Grey Blue



3027 Raspberry Red



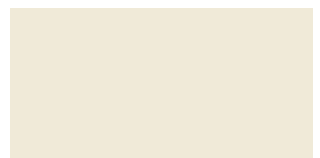
4005 Blue Lilac



3015 Light Pink



3012 Beige Red



9001 Cream



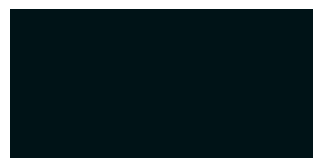
7035 Light Grey



7031 Blue Grey



7037 Dusty Grey



9005 Jet Black



calzini in metallo



Table Place Chairs_ ti offre la possibilità di personalizzare sedie e sgabelli con calzini in metallo disponibili in finiture diverse

FINITURE



Rosa



Chrome



Matt Gold



Antiqued Gold



Shiny Gold



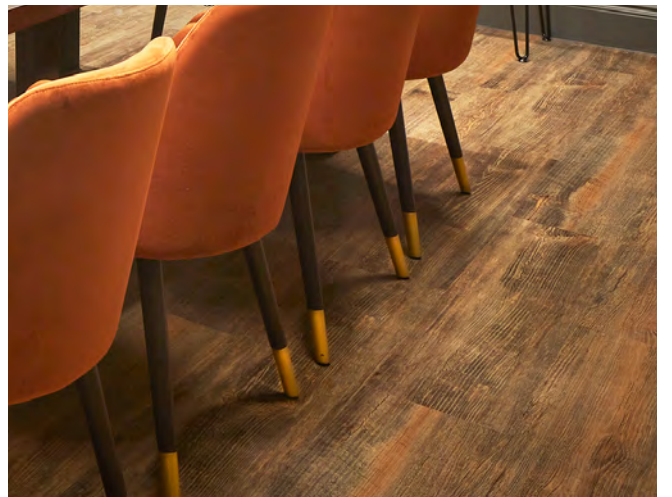
Brushed Gold



Antiqued Rose



Antiqued Chrome











Roots
RIDGE
COFFEE ROASTERS

EXPANDED



specification journey

- 1 pick your product 
- 2 configure your design 
- 3 fabrics & finishes 
- 4 specify with CAD or visit store 
- 5 manufacture production & logistics 
- 6 product on-site 



Vieni a trovarci

VIA DELL'ARTIGIANATO
16 00030
SAN CESAREO
(RM)

Salutateci

T: +39 06 6220 5009
E: INFO@TABLEPLACECHAIRS.COM

tableplacechairs.com/it