



FABRICS & FINISHES  
2021

TABLE PLACE  
CHAIRS\_

[tableplacechairs.com](http://tableplacechairs.com)



BLACK  
R-10

TABLE PLACE  
CHAIRS...  
cat a / revival

PUTTY  
R-12

TABLE PLACE  
CHAIRS...  
cat a / revival

PUTTY  
R-12

PUTTY  
R-12

PUTTY  
R-12

PUTTY  
R-12

PUTTY  
R-12

PUTTY  
R-12

PUTTY  
R-12

SUNSET  
R-11

TABLE PLACE  
CHAIRS...  
cat a / revival

NEUTRAL  
R-10

TABLE PLACE  
CHAIRS...  
cat a / revival

NEUTRAL  
R-10

NEUTRAL  
R-10

NEUTRAL  
R-10

NEUTRAL  
R-10

NEUTRAL  
R-10

NEUTRAL  
R-10



Fabrics **P.4** / Finishes **P.20** / Metal Socks **P.24**

# fabrics



All our upholstered products are available in COM/COL but we have our standard global fabric range that has been selected for the contract market across the globe.

A fully tried and tested fabric range, suitable for contract use and tested globally. These fabrics meet the requirements for fire and contract use all across the world.

All fabrics we recommend are Crib 5 compliant for the contract environment Globally

All fabrics in our range have a minimum of 50,000 rub tests (Martindale rub test)

All foam used in our upholstered products are CMHR (fire rated) foam and where it is a formed foam we use PUR certified foam.

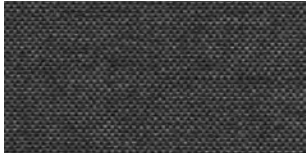
THESE FABRICS MEET THE REQUIREMENTS FOR  
FIRE AND CONTRACT USE ALL ACROSS THE WORLD





**FABRICS / CATEGORY A: REVIVAL**

**An act or instance of reviving; the state of being revived.** *Renewed attention to or interest in something. A new presentation or publication of something old. We felt bringing something back to life was appropriate for this range of fabrics; with their muted tones, understated look and feel. Variations in colour and weave give it a revived look and feel, as if they have been brought back to life for modern furnishing...*



R-01 Charcoal



R-02 Beige



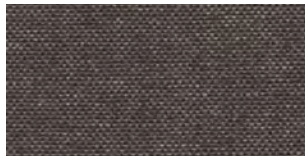
R-03 Light Grey



R-04 Wheat



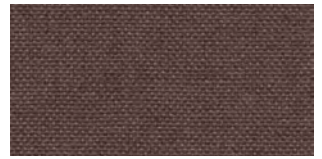
R-05 Light Brown



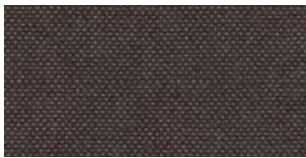
R-06 Dark Brown



R-07 Brown



R-08 Chocolate



R-09 Dark Chocolate



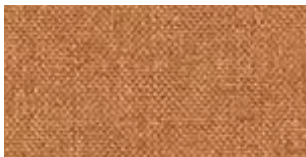
R-10 Black



R-11 Sunset



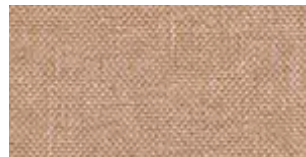
R-12 Yellow



R-13 Orange



R-14 Rhubarb & Custard



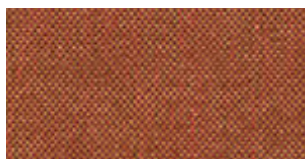
R-15 Putty



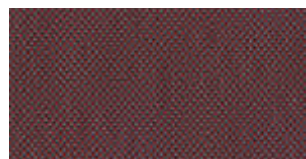
R-16 Neutral



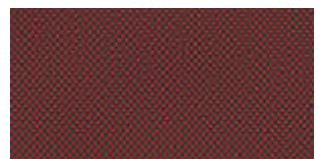
R-17 Grass



R-18 Autumn Red



R-19 Dusk



R-20 Deep Red



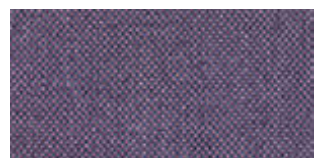
R-21 Red Brown



R-22 Deep Pink



R-23 Blueberry



R-24 Lavender



CALIFORNIA

FABRIC / CATEGORY A: REVIVAL

**An act or instance of reviving; the state of being revived.** *Renewed attention to or interest in something. A new presentation of publication of something old.* We felt bringing something back to life was appropriate for this range of fabrics; with their muted tones, understated look and feel. Variations in colour and weave give it a revived look and feel, as if they have been brought back to life for modern furnishing...



R-25 Soft Purple



R-26 Autumn Pink



R-27 Soft Pink



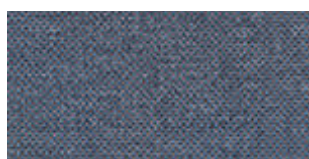
R-28 Aqua



R-29 Light Blue



R-30 Mid Blue



R-31 Midnight Sky



R-32 Sea Blue



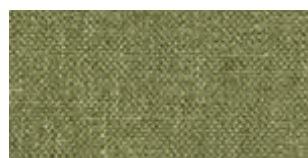
R-33 Dark Blue



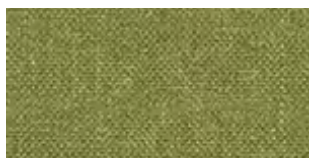
R-34 Liquorice



R-35 Hazy Purple



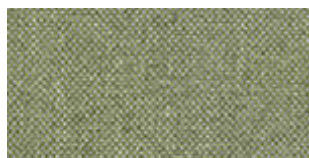
R-36 Green



R-37 Bright Green



R-38 Moss



R-39 Olive



R-40 Dark Grey



R-41 Stone



R-42 Grey

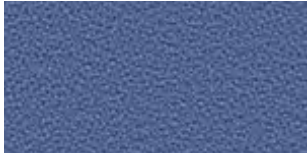
FABRIC / CATEGORY A: MOMENTUM

The force that keeps an object moving, or keeps an event developing after it has started. Momentum feels colourful and has movement! This range has so many colourways that they seem to create movement, pop and brightness to a space!

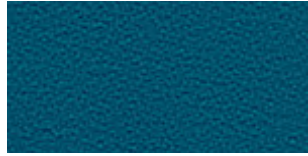


**FABRIC / CATEGORY A: MOMENTUM**

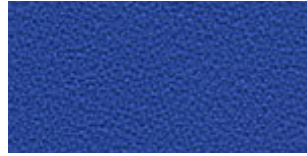
**The force that keeps an object moving, or keeps an event developing after it has started.**  
 Momentum feels colourful and has movement! This range has so many colourways that they seem to create movement, pop and brightness to a space!



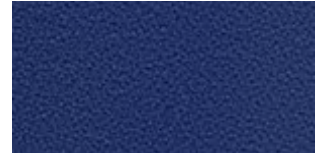
M-25 Blue Moon



M-26 Dark Teal



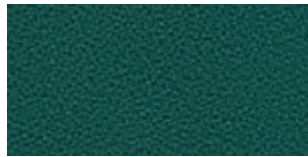
M-27 Navy



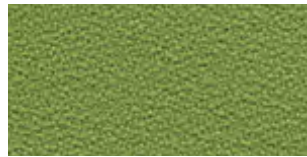
M-28 Dark Blue



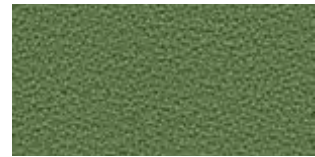
M-29 Midnight



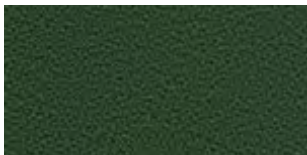
M-30 Emerald



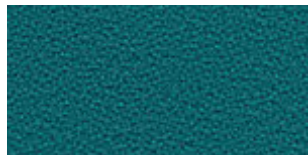
M-31 Lime



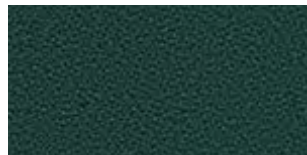
M-32 Moss



M-33 Dark Green



M-34 Teal



M-35 Forest Green



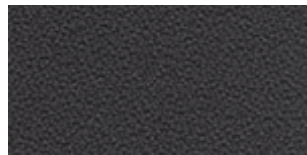
M-36 Fog



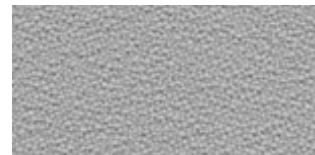
M-37 Dark Grey



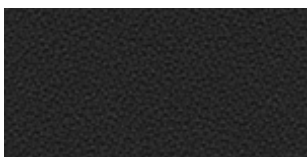
M-38 Rock



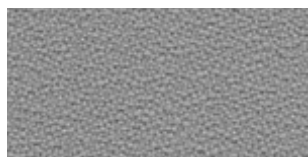
M-39 Anthracite



M-40 Elephant



M-41 Black



M-42 Stone



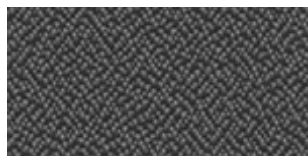
M-43 Hedgehog



M-44 Pinball



M-45 Sea Floor



M-46 Badger



CALIFORNIA





FABRIC / CATEGORY B: DIVERSITY

Many different types of things or people being included in something; a range of different things or people. We admit this is different and that is why we wanted to use it. With its weave and colours, it can be a great fabric to set off a colour theme with texture.



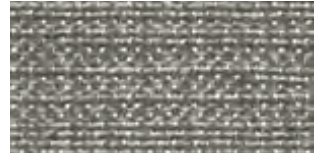
D-01 Black



D-02 Hounds Tooth



D-03 Stone



D-04 Chocolate



D-05 Smoke



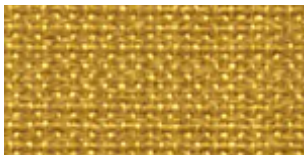
D-06 Dark Brown



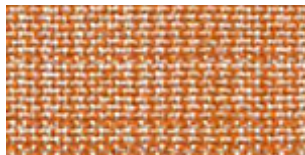
D-07 Canary



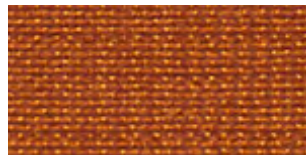
D-08 Corn



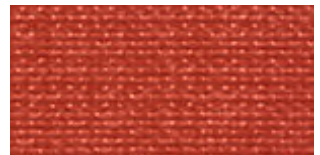
D-09 Sun



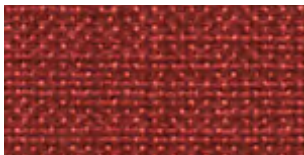
D-10 Clementine



D-11 Jaffa



D-12 Rhubarb



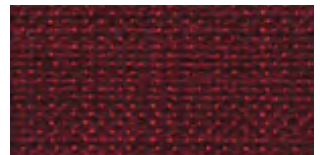
D-13 Bergen



D-14 Red



D-15 Mulled Wine



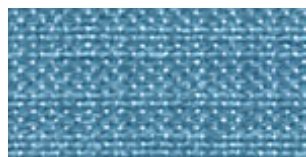
D-16 Burgundy



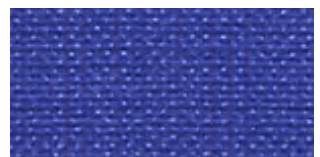
D-17 Grape



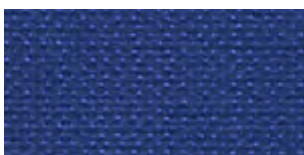
D-18 Baby Blue



D-19 Crystal Blue



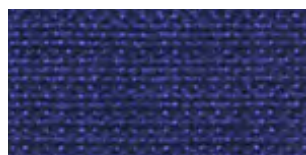
D-20 Sapphire



D-21 Oxford



D-22 Midnight



D-23 Blueberry



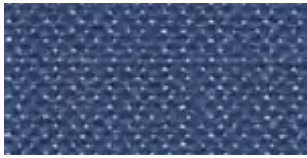
D-24 Humpback Blue



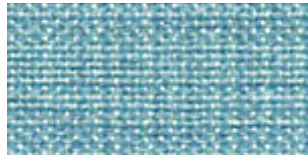
CALIFORNIA

**FABRIC / CATEGORY B: DIVERSITY**

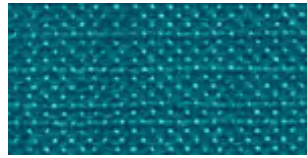
**Many different types of things or people being included in something; a range of different things or people.** We admit this is different and that is why we wanted to use it. With its weave and colours, it can be a great fabric to set off a colour theme with texture.



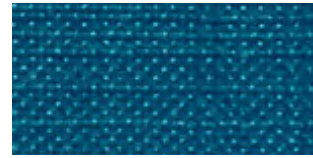
D-25 Winter Blue



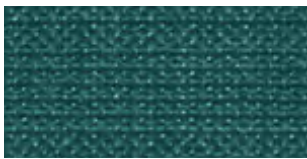
D-26 Peppermint



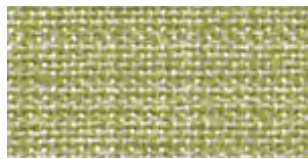
D-27 Jolt



D-28 Ocean



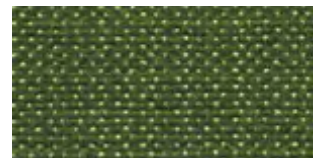
D-29 Butterfly Green



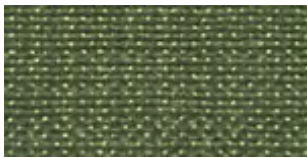
D-30 Mojito



D-31 Apple



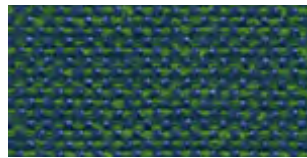
D-32 Lizard



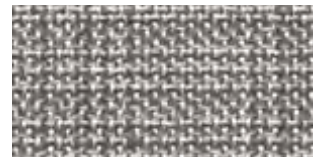
D-33 Olive



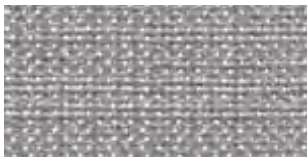
D-34 Green



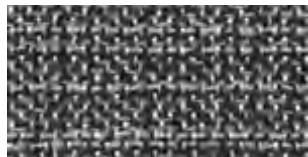
D-35 Seaweed



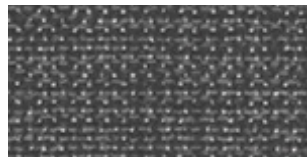
D-36 Concrete



D-37 Light Grey



D-38 Zebra



D-39 Inc



D-40 Charcoal



CALIFORNIA



**FABRIC / CATEGORY B: EMOTION FAUX LEATHER**

**A strong feeling such as love or anger, or strong feelings in general.** Feelings, love, anger, emotions are all areas of imagination, which have to be controlled and defined, described and this collection is just that! It feels like poetry and song.



Em-01 White Room



Em-02 Beige Before Beauty



Em-03 Scroll Of Parchment



Em-04 Harvest



Em-05 Pearl Band



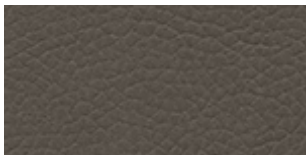
Em-06 Clear Light



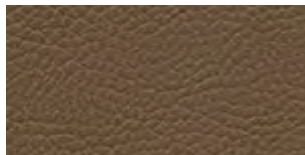
Em-07 Wake Up



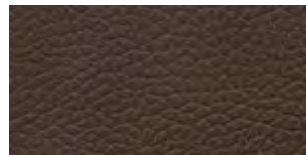
Em-08 Association



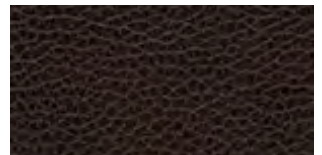
Em-09 Cinder Road



Em-10 Revelations



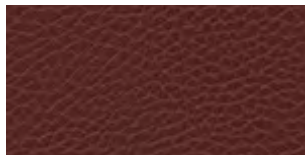
Em-11 Illusion



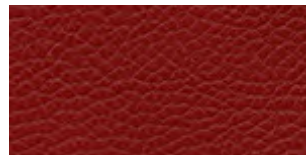
Em-12 In The Woodland



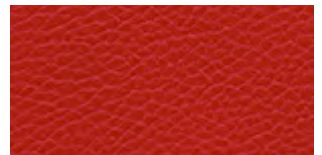
Em-13 Lotus Rose



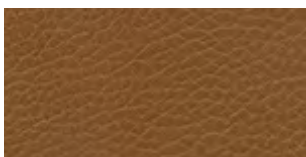
Em-14 Tiger Curry



Em-15 Electric Prune



Em-16 Morning Glory



Em-17 Hippo Dream



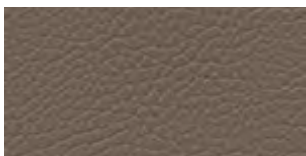
Em-18 Two Suns



Em-19 Rust Never Sleeps



Em-20 Bark



Em-21 Shady Grove



Em-22 Jungle Marmalade



Em-23 Lime Ranger



Em-24 The Green Tambourine



IMO



M1-M2



CLASS 11M



B1-B2

CALIFORNIA

**FABRIC / CATEGORY B: EMOTION FAUX LEATHER**

**A strong feeling such as love or anger, or strong feelings in general.** Feelings, love, anger, emotions are all areas of imagination, which have to be controlled and defined, described and this collection is just that! It feels like poetry and song.



Em-25 Fever Tree



Em-26 Moby Grape



Em-27 Jewel In The Crown



Em-28 The Peppermint Trolley



Em-29 Lagoon Mist



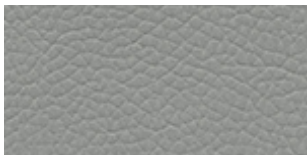
Em-30 Blue Cheer



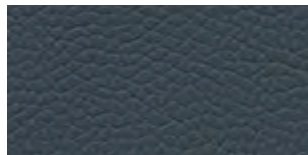
Em-31 The Imperial



Em-32 Ultimate Spinach



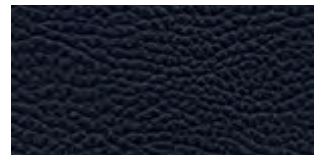
Em-33 Battle Ship Blues



Em-34 Basic Blues



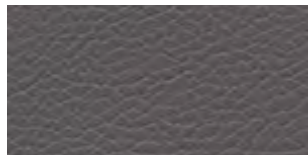
Em-35 The Palace



Em-36 Night Watch



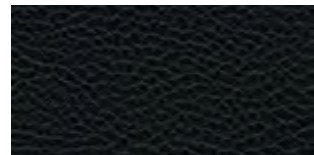
Em-37 Silver City



Em-38 Stone Cheer



Em-39 Window To The Stars



Em-40 Dark Train



IMO



MI-M2



CLASS 1 IM



BI-B2

CALIFORNIA

To search and discover (about something). The explore range has been inspired by discovering natural elements; whether sensory or visual, these colours will give that feel.



Ex-01 Ice



Ex-02 Luxury



Ex-03 Moon



Ex-04 Chimney



Ex-05 Cocoa



Ex-06 Shadow



Ex-07 Huntsman



Ex-08 Pipe



Ex-09 Nappa



Ex-10 Carmenere



Ex-11 Atmosphere



Ex-12 Duck Egg



Ex-13 Ocean



IMO



M1-M2



CLASS 1 IM

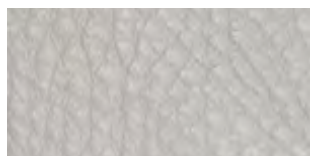


B1-B2

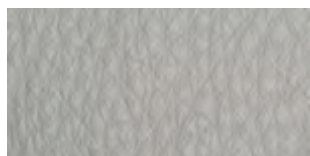
CALIFORNIA

**FABRIC / CATEGORY C: JOURNAL REAL LEATHER**

A written record of what you have done each day, sometimes including your private thoughts and feelings. This array of colours bring out travel, experiences and objects that will enter your thoughts and feelings as you look around.



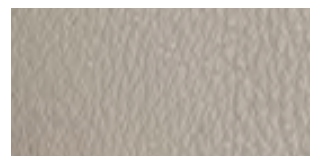
J-01 Laundry



J-02 Candle



J-03 Paris Sky



J-04 Cloud



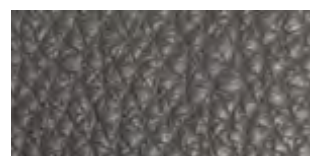
J-05 Pebble



J-06 Baseball



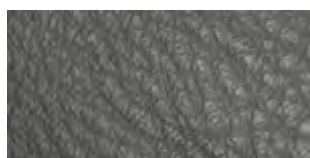
J-07 Riding Boot



J-08 Locomotive



J-09 Berries



J-10 Broadway



J-11 Lucky



J-12 Mangrove



J-13 Pigeon



J-14 Field



J-15 Clay



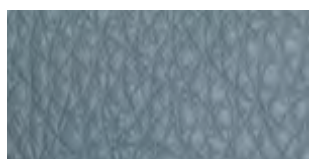
J-16 Ballet



J-17 Hamper



J-18 Merchant



J-19 Voyage



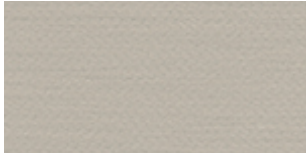
J-20 Gulf Stream



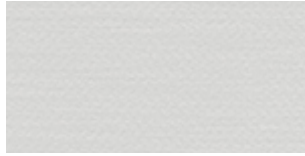


**FABRIC / CATEGORY D: VITALITY**

**Energy and strength.** This fabric has a youthful appearance; it is soft and vibrant, giving a sense of vitality!



V-01 Cream



V-02 White



V-03 Beige



V-04 Putty



V-05 Mole



V-06 Dark Brown



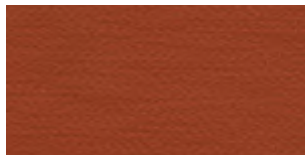
V-07 Anthracite



V-08 Mustard



V-09 Tangerine



V-10 Rust Orange



V-11 Red



V-12 Deep Red



V-13 Maroon



V-14 Violet



V-15 Dark Blue



V-16 Midnight Blue



V-17 Navy



V-18 Blue



V-19 Aqua



V-20 Teal



V-21 Green



V-22 Racing Green



V-23 Forest Green



V-24 Moss



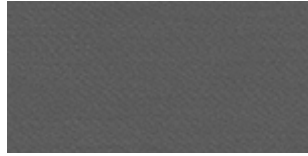
CALIFORNIA

**FABRIC / CATEGORY D: VITALITY**

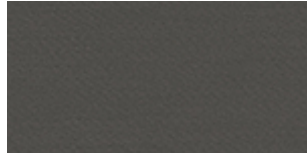
**Energy and strength.** This fabric has a youthful appearance; it is soft and vibrant, giving a sense of vitality!



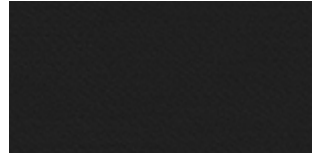
V-25 Stone



V-26 Grey



V-27 Charcoal



V-28 Black



IMO



MI-M2



CLASS 1 IM



B1-B2

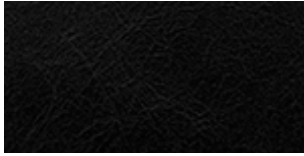
CALIFORNIA



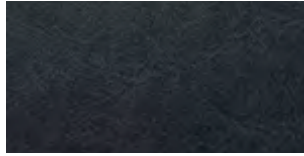


**FABRIC / CATEGORY E: TRADITION REAL LEATHER**

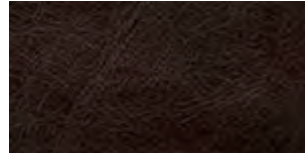
**A belief, principle, or way of acting that people in a particular society or group have followed for a long time.** Stepping back in time, following an age-old ritual, or that musical sound which brings a sense of tradition. The aesthetics and natural properties of real leather has a quality that has been accepted in society over many years.



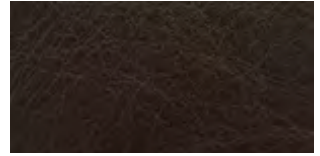
T-01 Ebony



T-02 Coast



T-03 Motley



T-04 Horizon



T-05 Ancient



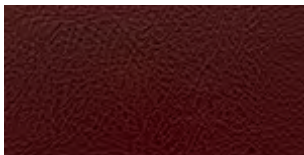
T-06 Burnt



T-07 Roots



T-08 Wood



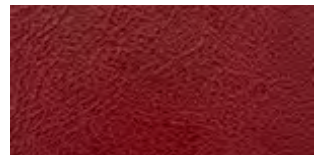
T-09 Wine



T-10 Classical



T-11 Ensign



T-12 Rythmn



T-13 Folk



T-14 Gypsy



T-15 Hogan



T-16 Icon



T-17 Corn



T-18 Fresco



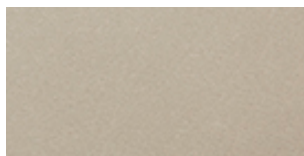
T-19 Bind



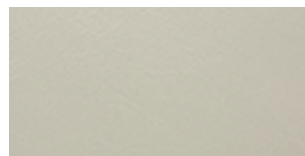
T-20 Euphoric



T-21 Clouding



T-22 Mist

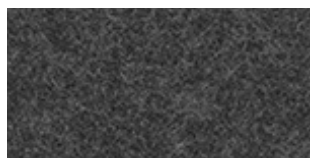


T-23 Chrome



FABRIC / CATEGORY E: INFUSION

The act of adding one things to another to make it stronger or better. Taste, colour, smell, sounds and those distant far-reaching lands, come together to create an infusion of texture which is found amongst this fabric range.



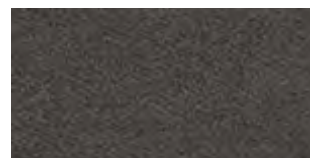
I-01 Charcoal



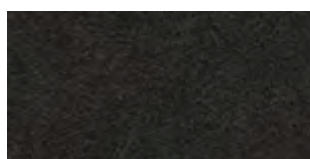
I-02 Siberia



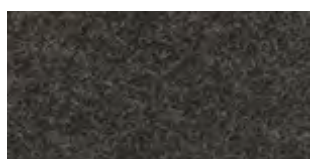
I-03 Beige



I-04 Brown



I-05 Burnt



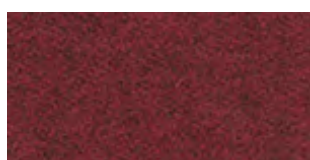
I-06 Dark Brown



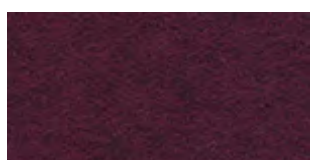
I-07 Pumpkin



I-08 Mustard



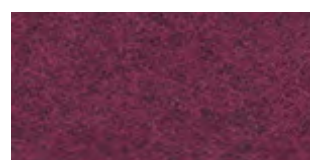
I-09 Deep Red



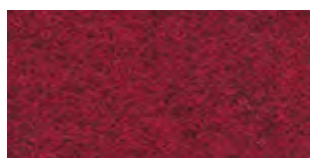
I-10 Burgundy



I-11 Blush Pink



I-12 Magenta



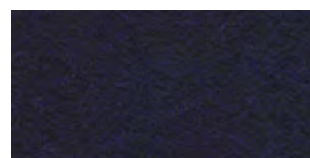
I-13 Red



I-14 Flamingo



I-15 Dark Blue



I-16 Blackcurrent



I-17 Purple



I-18 Star Of Bombay



I-19 Blue



I-20 Light Blue



I-21 Navy



I-22 Turtle Bay



I-23 Midnight Blue



I-24 Sapphire



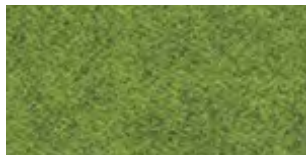
The act of adding one things to another to make it stronger or better. Taste, colour, smell, sounds and those distant far-reaching lands, come together to create an infusion of texture which is found amongst this fabric range.



I-25 Copenhagen



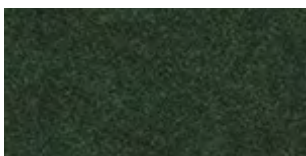
I-26 Leaf Green



I-27 Lime



I-28 Citrus



I-29 Forest Green



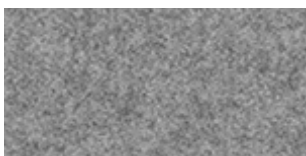
I-30 Kiwi



I-31 Mist



I-32 Black

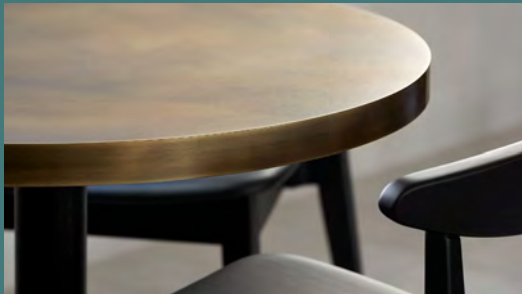


I-33 Ice



CLASS 1 IM

# finishes

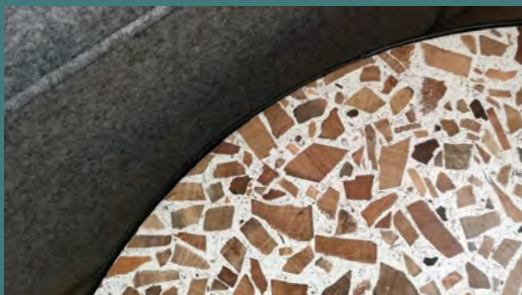


## METALS

When specifying Brass, Copper and Zinc a finish needs to be selected for the level of Patina. All table tops are then clear lacquered.

All Steel and Aluminium can be powdercoated to any RAL colour. Steel is available in clear lacquer to give the industrial finish. Die Cast Aluminium is available in polished or powdercoated.

Chrome and polished aluminium are in the natural finish where applicable.



## SUSTAINABLE

Recycled plastic materials are used for table tops and surfaces and are available on request. These will have colour variances and sometimes differ from samples.

Materials include recycled wood foresso, recycled plastic terrazzo, jesmonite and a series of other innovative sustainable materials.



## WOOD

Timbers used for our manufacturing chairs and tables are Oak, Beech and Ash. Outdoor timbers used are Iroko and Robinia, with a natural oiled finish.

All timbers are sustainably sourced through FSC and PEFC schemes. Timber is available in our standard stains and colours, distressed on request.

Plywood used has a Beech, or an Oak veneer.

All lacquers used on our timber finishes are water based to support our sustainability, healthy, safety processes and goals.



## STONE

All stones are a natural material and may have defects, all marble and terrazzo need finishing to seal the stone. Wine and dark oils will stain if not cleaned off immediately.

Quartz and resin can be formed and are available in a number of designs, where required, drawings and specifications will be required for sign off before manufacture.



**FINISHES / WOOD STAINS**

**OAK STAINS**



O10 The Jetty



O19 The Fjords



O7 Dimension



O8 The Roastery



O9 Barn Beam



O16 Looking Natural

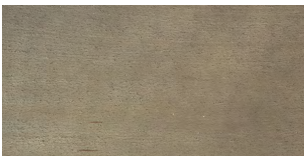


O18 The School Fence

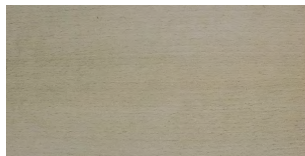


Distressed On Request

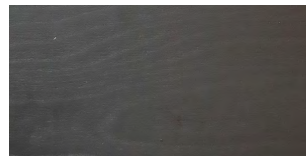
**BEECH STAINS**



B10 The Jetty



B19 The Fjords



B7 Dimension



B8 The Roastery



B9 Barn Beam



B16 Looking Natural



B18 The School Fence



Distressed On Request

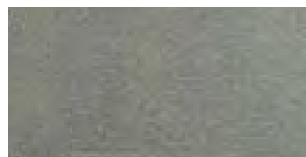
**FINISHES / ZINC**



Z1 Light Zinc



Z2 Zinc



Z3 Dark Zinc

**FINISHES / COPPER**



C1 Light Copper



C2 Copper



C3 Dark Copper

**FINISHES / BRASS**



B1 Light Brass

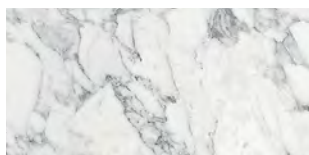


B2 Brass

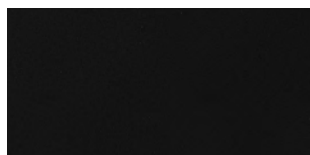


B3 Dark Brass

**FINISHES / LAMINATE**



Bianco



Black Soft Touch



Burnt Red Soft Touch



Blue Soft Touch



White Soft Touch

**FINISHES / STONE**

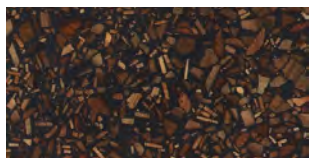


Terrazzo



Carrara

**FINISHES / RECLAIMED WOOD FINISH**



Foresso Woodagain

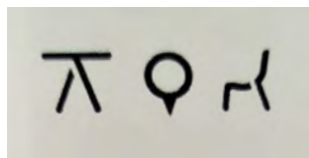
**FINISHES / PRINTED GLASS**



Antiqued



RAL Colour



Image/Logo



FINISHES / RAL COLOURS



3007 Black Red



3020 Traffic Red



2001 Red Orange



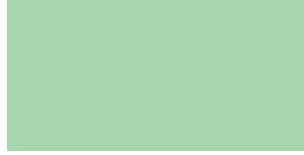
2003 Pastel Orange



1018 Zinc Yellow



1014 Ivory



6019 Pastel Green



6037 Pure Green



6035 Pearl Green



6004 Blue Green



6033 Mint Turquoise



6034 Pastel Turquoise



5012 Light Blue



5022 Night Blue



5008 Grey Blue



3027 Raspberry Red



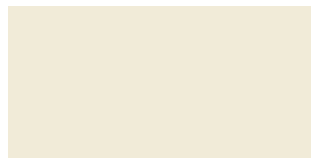
4005 Blue Lilac



3015 Light Pink



3012 Beige Red



9001 Cream



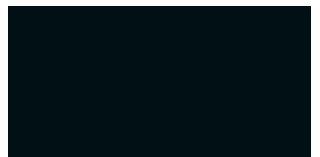
7035 Light Grey



7031 Blue Grey



7037 Dusty Grey



9005 Jet Black

# metal socks



We offer a range of chairs and barstools that can be finished with metal socks. Here you have eight sock options to suit your design, from antiqued rose for the more industrial styles to the shiny gold. Looking for other styles, get in touch and we'll see what we can do!



# FINISHES



Rose



Chrome



Matt Gold



Antiqued Gold



Shiny Gold



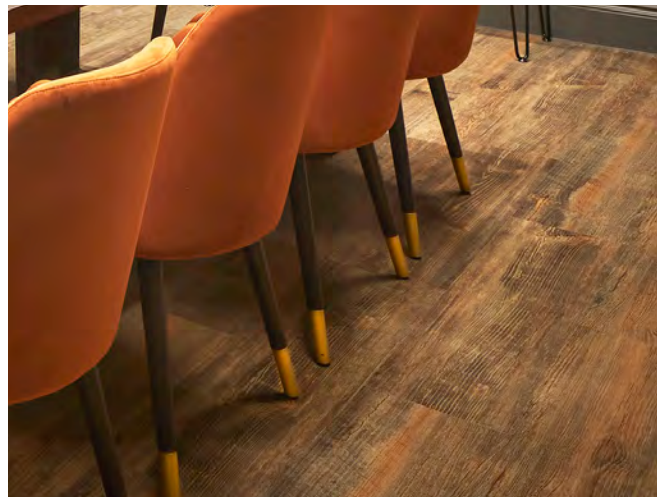
Brushed Gold



Antiqued Rose



Antiqued Chrome



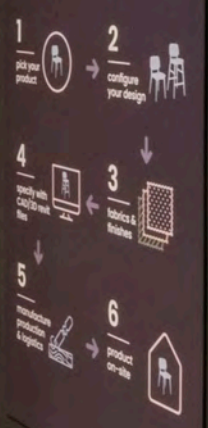


Roots  
BRIDGE  
COFFEE ROASTERS

EXPANDED



# specification journey



## **Find Us**

THE BANKING HALL  
74 GOSWELL ROAD  
CLERKENWELL  
LONDON  
EC1V 7DA

## **Say Hello**

T: +44(0)0330 1222 117  
E: [INFO@TABLEPLACECHAIRS.COM](mailto:INFO@TABLEPLACECHAIRS.COM)

[tableplacechairs.com](http://tableplacechairs.com)