



FABRICS
2021

TABLE PLACE
CHAIRS_

tableplacechairs.com



BLACK
R-10

TABLE PLACE
CHAIRS...

cat a / revival

PUTTY
R-10

TABLE PLACE
CHAIRS...

cat a / revival

NEUTRAL
R-10

TABLE PLACE
CHAIRS...

SUNSET
R-11

TABLE PLACE
CHAIRS...

TABLE PLACE
CHAIRS...

TABLE PLACE
CHAIRS...

TABLE PLACE
CHAIRS...

TABLE PLACE
CHAIRS...

SUNSET
R-11

TABLE PLACE
CHAIRS...

cat a / revival

NEUTRAL
R-10

TABLE PLACE
CHAIRS...

cat a / revival

TABLE PLACE
CHAIRS...

TABLE PLACE
CHAIRS...

TABLE PLACE
CHAIRS...

TABLE PLACE
CHAIRS...

TABLE PLACE
CHAIRS...

TABLE PLACE
CHAIRS...

TABLE PLACE
CHAIRS...

TABLE PLACE
CHAIRS...



CATEGORY A: Revival P.5 / Momentum P.7

CATEGORY B: Diversity P.9 / Emotion Faux Leather P.11

CATEGORY C: Explore Faux Leather P.13 / Journal Real Leather P.14

CATEGORY D: Vitality P.15

CATEGORY E: Tradition Real Leather P.17 / Infusion P.18

fabrics



All our upholstered products are available in COM/COL but we have our standard global fabric range that has been selected for the contract market across the globe.

A fully tried and tested fabric range, suitable for contract use and tested globally. These fabrics meet the requirements for fire and contract use all across the world.

All fabrics we recommend are Crib 5 compliant for the contract environment Globally

All fabrics in our range have a minimum of 50,000 rub tests (Martindale rub test)

All foam used in our upholstered products are CMHR (fire rated) foam and where it is a formed foam we use PUR certified foam.

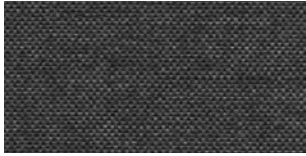
THESE FABRICS MEET THE REQUIREMENTS FOR
FIRE AND CONTRACT USE ALL ACROSS THE WORLD





FABRICS / CATEGORY A: REVIVAL

An act or instance of reviving; the state of being revived. *Renewed attention to or interest in something. A new presentation of publication of something old. We felt bringing something back to life was appropriate for this range of fabrics; with their muted tones, understated look and feel. Variations in colour and weave give it a revived look and feel, as if they have been brought back to life for modern furnishing...*



R-01 Charcoal



R-02 Beige



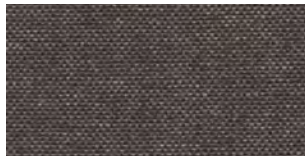
R-03 Light Grey



R-04 Wheat



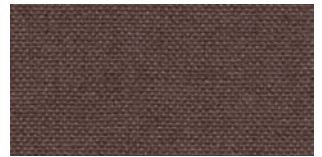
R-05 Light Brown



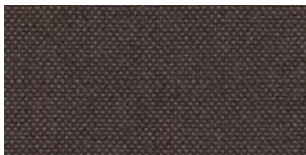
R-06 Dark Brown



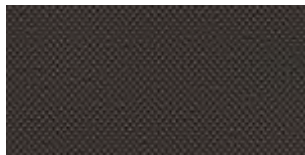
R-07 Brown



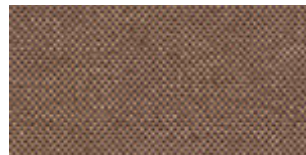
R-08 Chocolate



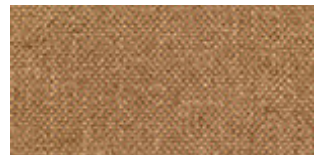
R-09 Dark Chocolate



R-10 Black



R-11 Sunset



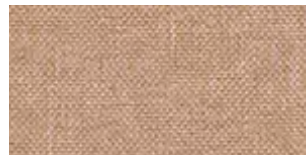
R-12 Yellow



R-13 Orange



R-14 Rhubarb & Custard



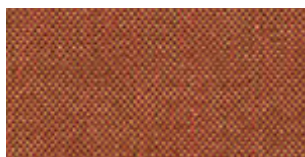
R-15 Putty



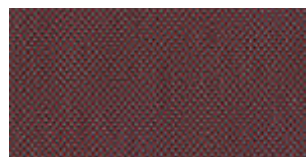
R-16 Neutral



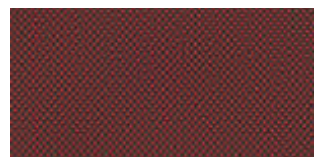
R-17 Grass



R-18 Autumn Red



R-19 Dusk



R-20 Deep Red



R-21 Red Brown



R-22 Deep Pink



R-23 Blueberry



R-24 Lavender



IMO



M1-M2



CLASS 11M



B1-B2

CALIFORNIA

FABRIC / CATEGORY A: REVIVAL

An act or instance of reviving; the state of being revived. *Renewed attention to or interest in something. A new presentation of publication of something old.* We felt bringing something back to life was appropriate for this range of fabrics; with their muted tones, understated look and feel. Variations in colour and weave give it a revived look and feel, as if they have been brought back to life for modern furnishing...



R-25 Soft Purple



R-26 Autumn Pink



R-27 Soft Pink



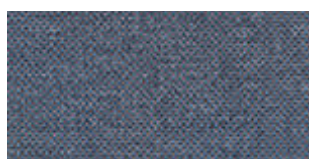
R-28 Aqua



R-29 Light Blue



R-30 Mid Blue



R-31 Midnight Sky



R-32 Sea Blue



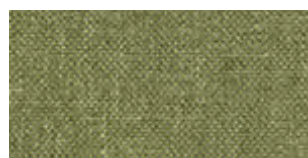
R-33 Dark Blue



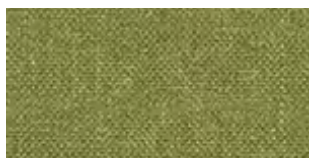
R-34 Liquorice



R-35 Hazy Purple



R-36 Green



R-37 Bright Green



R-38 Moss



R-39 Olive



R-40 Dark Grey



R-41 Stone



R-42 Grey

FABRIC / CATEGORY A: MOMENTUM

The force that keeps an object moving, or keeps an event developing after it has started. Momentum feels colourful and has movement! This range has so many colourways that they seem to create movement, pop and brightness to a space!





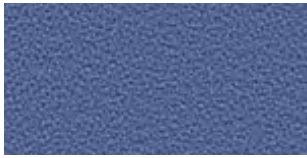




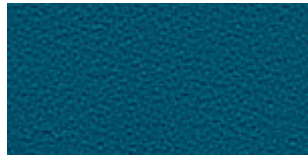



FABRIC / CATEGORY A: MOMENTUM

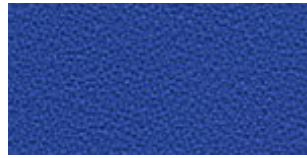
The force that keeps an object moving, or keeps an event developing after it has started.
 Momentum feels colourful and has movement! This range has so many colourways that they seem to create movement, pop and brightness to a space!



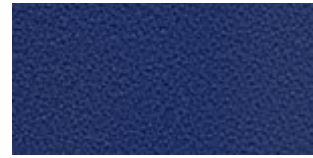
M-25 Blue Moon



M-26 Dark Teal



M-27 Navy



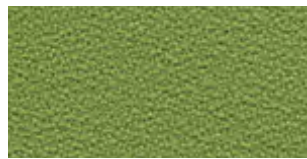
M-28 Dark Blue



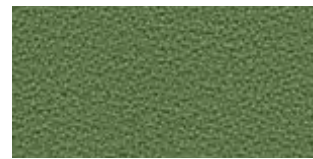
M-29 Midnight



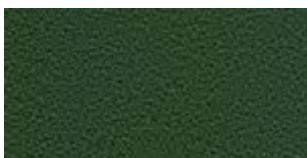
M-30 Emerald



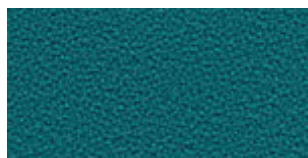
M-31 Lime



M-32 Moss



M-33 Dark Green



M-34 Teal



M-35 Forest Green



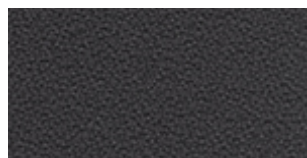
M-36 Fog



M-37 Dark Grey



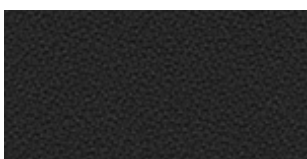
M-38 Rock



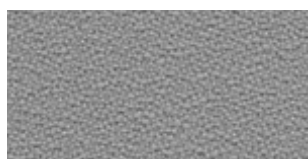
M-39 Anthracite



M-40 Elephant



M-41 Black



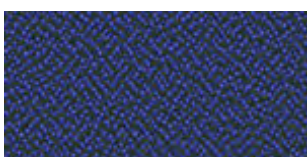
M-42 Stone



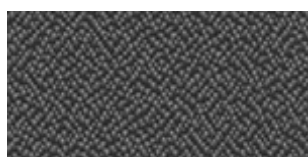
M-43 Hedgehog



M-44 Pinball



M-45 Sea Floor



M-46 Badger



CALIFORNIA



FABRIC / CATEGORY B: DIVERSITY

Many different types of things or people being included in something; a range of different things or people. We admit this is different and that is why we wanted to use it. With its weave and colours, it can be a great fabric to set off a colour theme with texture.



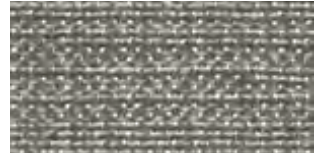
D-01 Black



D-02 Hounds Tooth



D-03 Stone



D-04 Chocolate



D-05 Smoke



D-06 Dark Brown



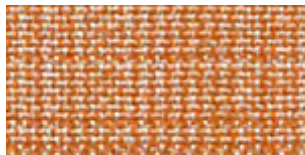
D-07 Canary



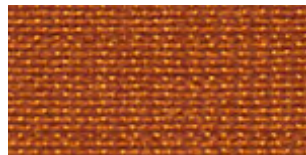
D-08 Corn



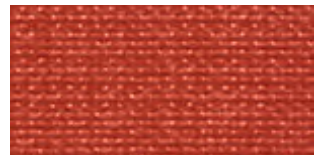
D-09 Sun



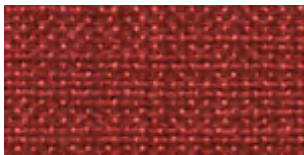
D-10 Clementine



D-11 Jaffa



D-12 Rhubarb



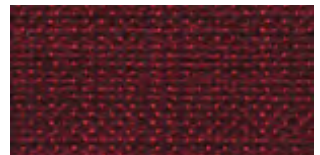
D-13 Bergen



D-14 Red



D-15 Mulled Wine



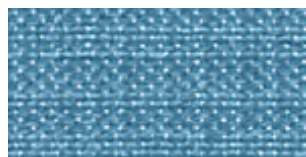
D-16 Burgundy



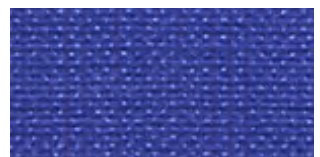
D-17 Grape



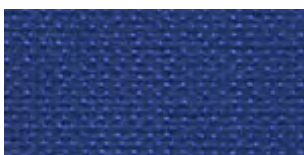
D-18 Baby Blue



D-19 Crystal Blue



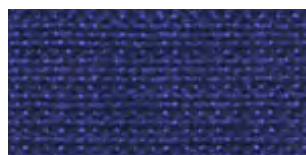
D-20 Sapphire



D-21 Oxford



D-22 Midnight



D-23 Blueberry



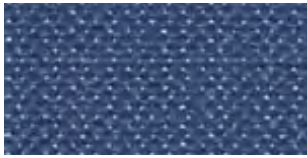
D-24 Humpback Blue



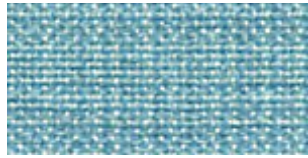
CALIFORNIA

FABRIC / CATEGORY B: DIVERSITY

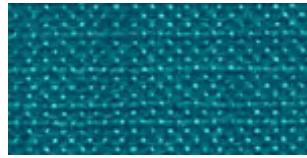
Many different types of things or people being included in something; a range of different things or people. We admit this is different and that is why we wanted to use it. With its weave and colours, it can be a great fabric to set off a colour theme with texture.



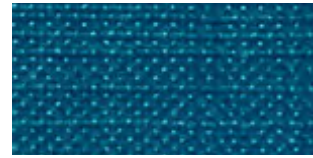
D-25 Winter Blue



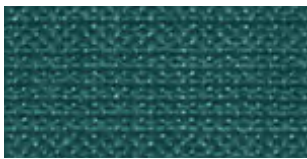
D-26 Peppermint



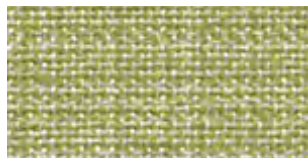
D-27 Jolt



D-28 Ocean



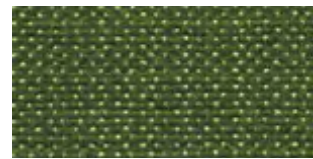
D-29 Butterfly Green



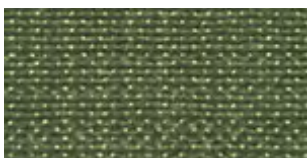
D-30 Mojito



D-31 Apple



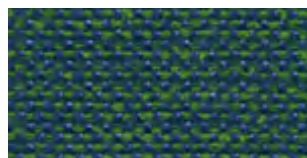
D-32 Lizard



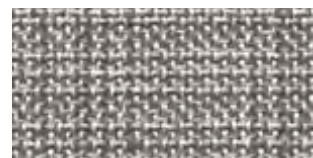
D-33 Olive



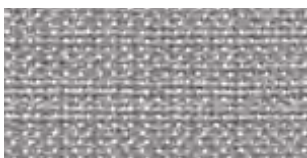
D-34 Green



D-35 Seaweed



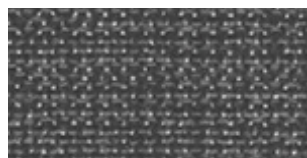
D-36 Concrete



D-37 Light Grey



D-38 Zebra



D-39 Inc



D-40 Charcoal



CALIFORNIA



FABRIC / CATEGORY B: EMOTION FAUX LEATHER

A strong feeling such as love or anger, or strong feelings in general. Feelings, love, anger, emotions are all areas of imagination, which have to be controlled and defined, described and this collection is just that! It feels like poetry and song.



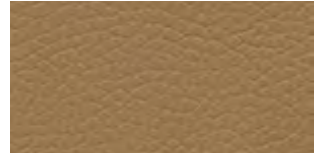
Em-01 White Room



Em-02 Beige Before Beauty



Em-03 Scroll Of Parchment



Em-04 Harvest



Em-05 Pearl Band



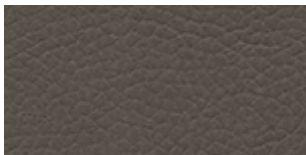
Em-06 Clear Light



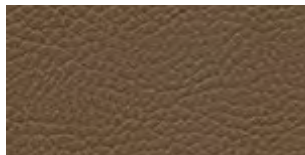
Em-07 Wake Up



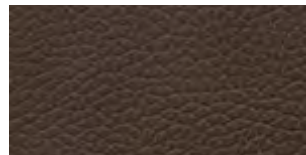
Em-08 Association



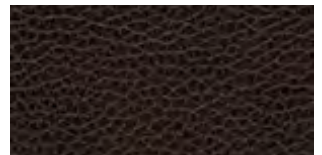
Em-09 Cinder Road



Em-10 Revelations



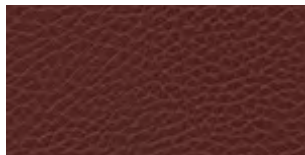
Em-11 Illusion



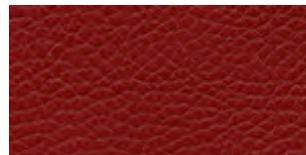
Em-12 In The Woodland



Em-13 Lotus Rose



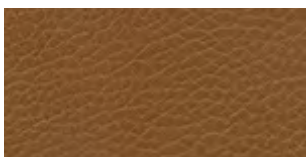
Em-14 Tiger Curry



Em-15 Electric Prune



Em-16 Morning Glory



Em-17 Hippo Dream



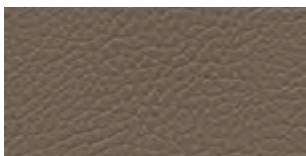
Em-18 Two Suns



Em-19 Rust Never Sleeps



Em-20 Bark



Em-21 Shady Grove



Em-22 Jungle Marmalade



Em-23 Lime Ranger



Em-24 The Green Tambourine



CALIFORNIA

FABRIC / CATEGORY B: EMOTION FAUX LEATHER

A strong feeling such as love or anger, or strong feelings in general. Feelings, love, anger, emotions are all areas of imagination, which have to be controlled and defined, described and this collection is just that! It feels like poetry and song.



Em-25 Fever Tree



Em-26 Moby Grape



Em-27 Jewel In The Crown



Em-28 The Peppermint Trolley



Em-29 Lagoon Mist



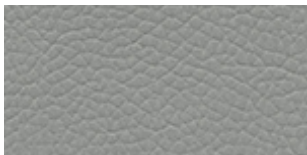
Em-30 Blue Cheer



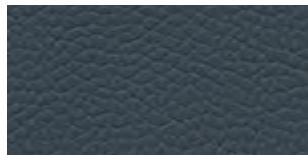
Em-31 The Imperial



Em-32 Ultimate Spinach



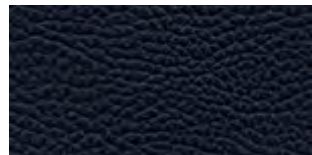
Em-33 Battle Ship Blues



Em-34 Basic Blues



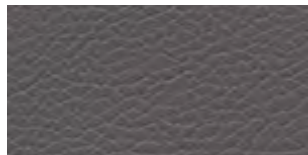
Em-35 The Palace



Em-36 Night Watch



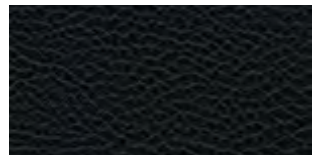
Em-37 Silver City



Em-38 Stone Cheer



Em-39 Window To The Stars



Em-40 Dark Train



IMO



MI-M2



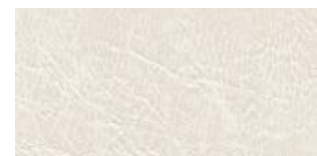
CLASS 1 IM



BI-B2

CALIFORNIA

To search and discover (about something). The explore range has been inspired by discovering natural elements; whether sensory or visual, these colours will give that feel.



Ex-01 Ice



Ex-02 Luxury



Ex-03 Moon



Ex-04 Chimney



Ex-05 Cocoa



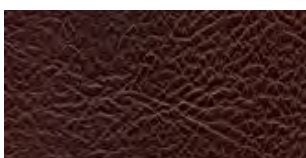
Ex-06 Shadow



Ex-07 Huntsman



Ex-08 Pipe



Ex-09 Nappa



Ex-10 Carmenera



Ex-11 Atmosphere



Ex-12 Duck Egg



Ex-13 Ocean



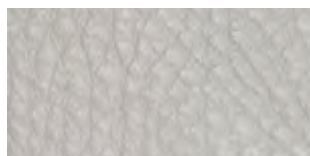




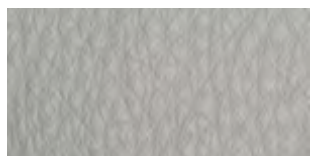



FABRIC / CATEGORY C: JOURNAL REAL LEATHER

A written record of what you have done each day, sometimes including your private thoughts and feelings. This array of colours bring out travel, experiences and objects that will enter your thoughts and feelings as you look around.



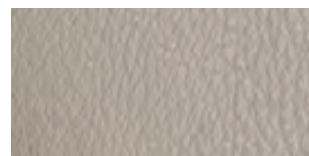
J-01 Laundry



J-02 Candle



J-03 Paris Sky



J-04 Cloud



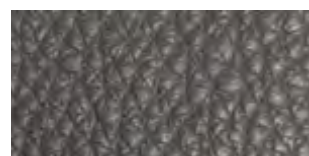
J-05 Pebble



J-06 Baseball



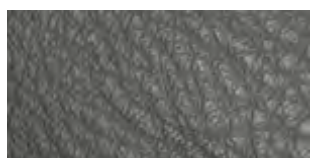
J-07 Riding Boot



J-08 Locomotive



J-09 Berries



J-10 Broadway



J-11 Lucky



J-12 Mangrove



J-13 Pigeon



J-14 Field



J-15 Clay



J-16 Ballet



J-17 Hamper



J-18 Merchant



J-19 Voyage



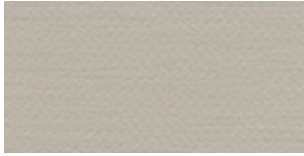
J-20 Gulf Stream



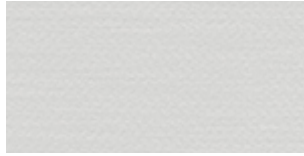


FABRIC / CATEGORY D: VITALITY

Energy and strength. This fabric has a youthful appearance; it is soft and vibrant, giving a sense of vitality!



V-01 Cream



V-02 White



V-03 Beige



V-04 Putty



V-05 Mole



V-06 Dark Brown



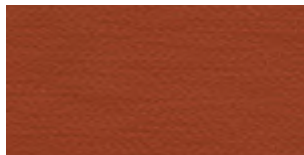
V-07 Anthracite



V-08 Mustard



V-09 Tangerine



V-10 Rust Orange



V-11 Red



V-12 Deep Red



V-13 Maroon



V-14 Violet



V-15 Dark Blue



V-16 Midnight Blue



V-17 Navy



V-18 Blue



V-19 Aqua



V-20 Teal



V-21 Green



V-22 Racing Green



V-23 Forest Green



V-24 Moss



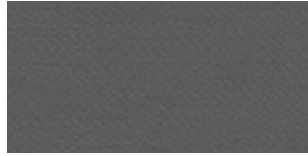
CALIFORNIA

FABRIC / CATEGORY D: VITALITY

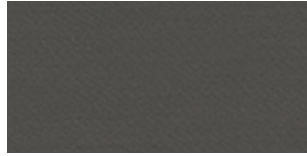
Energy and strength. This fabric has a youthful appearance; it is soft and vibrant, giving a sense of vitality!



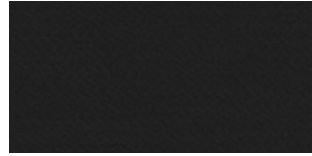
V-25 Stone



V-26 Grey



V-27 Charcoal



V-28 Black



IMO



MI-M2



CLASS 1 IM



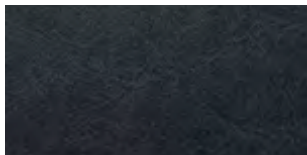
B1-B2

CALIFORNIA

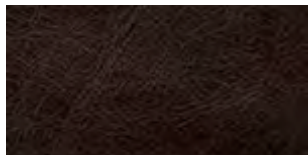
A belief, principle, or way of acting that people in a particular society or group have followed for a long time. Stepping back in time, following an age-old ritual, or that musical sound which brings a sense of tradition. The aesthetics and natural properties of real leather has a quality that has been accepted in society over many years.



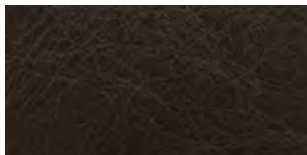
T-01 Ebony



T-02 Coast



T-03 Motley



T-04 Horizon



T-05 Ancient



T-06 Burnt



T-07 Roots



T-08 Wood



T-09 Wine



T-10 Classical



T-11 Ensign



T-12 Rythmn



T-13 Folk



T-14 Gypsy



T-15 Hogan



T-16 Icon



T-17 Corn



T-18 Fresco



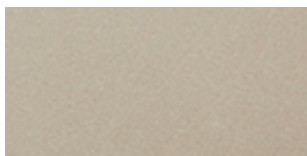
T-19 Bind



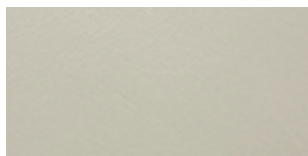
T-20 Euphoric



T-21 Clouding



T-22 Mist

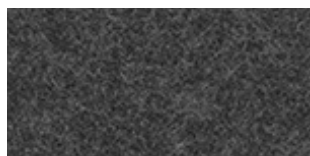


T-23 Chrome



FABRIC / CATEGORY E: INFUSION

The act of adding one things to another to make it stronger or better. Taste, colour, smell, sounds and those distant far-reaching lands, come together to create an infusion of texture which is found amongst this fabric range.



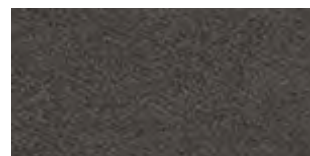
I-01 Charcoal



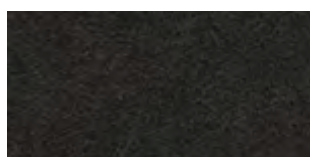
I-02 Siberia



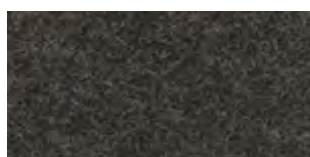
I-03 Beige



I-04 Brown



I-05 Burnt



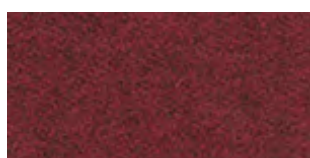
I-06 Dark Brown



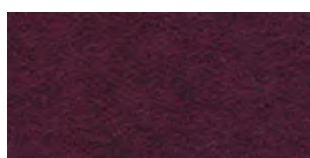
I-07 Pumpkin



I-08 Mustard



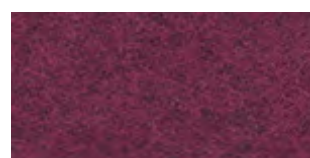
I-09 Deep Red



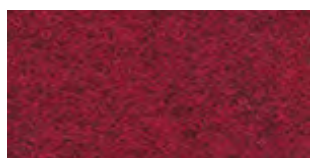
I-10 Burgundy



I-11 Blush Pink



I-12 Magenta



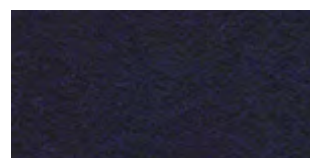
I-13 Red



I-14 Flamingo



I-15 Dark Blue



I-16 Blackcurrent



I-17 Purple



I-18 Star Of Bombay



I-19 Blue



I-20 Light Blue



I-21 Navy



I-22 Turtle Bay



I-23 Midnight Blue



I-24 Sapphire



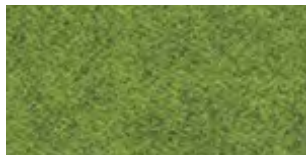
The act of adding one things to another to make it stronger or better. Taste, colour, smell, sounds and those distant far-reaching lands, come together to create an infusion of texture which is found amongst this fabric range.



I-25 Copenhagen



I-26 Leaf Green



I-27 Lime



I-28 Citrus



I-29 Forest Green



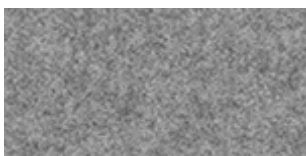
I-30 Kiwi



I-31 Mist



I-32 Black



I-33 Ice



CLASS 1 IM

Find Us

THE BANKING HALL
74 GOSWELL ROAD
CLERKENWELL
LONDON
EC1V 7DA

Say Hello

T: +44(0)0330 1222 117
E: INFO@TABLEPLACECHAIRS.COM

tableplacechairs.com